

Sling Saver Fittings / Accessories

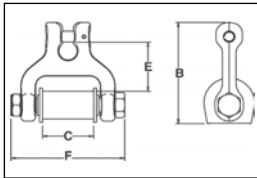
Sling Saver® Load Rated **"QT"** QUENCHED & TEMPERED **CE**

Sling Saver Fittings

S-282 WEB / CHAIN CONNECTOR



Designed around the same concept as our S-280 Web Connector, the S-282 Chain Connector makes the connection from your web sling to existing chain quick and easy.



- Available in three sizes:
 - 2.95 tonnes Working Load Limit links 50mm Webbing to 10mm chain.
 - 4.08 tonnes Working Load Limit links 35mm (75mm Tapered Webbing) to 13mm chain.
 - 5.67 tonnes Working Load Limit links 50mm (100mm Tapered Webbing) to 16mm chain.
- Alloy Steel (Quenched and Tempered).
- Each Connector has a Product Identification Code (PIC) for material traceability along with a Working Load Limit and the name Crosby forged into it.
- Uses same spool and cover as S-280 Web Connector.
- Replacement Kit for Spool and Web Cover available.

S-282 Web / Chain Connector

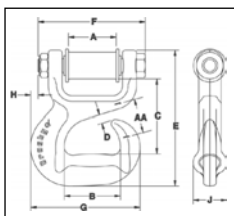
Round Sling Size (No.)	Web Slings*			Chain Size	Working Load Limit (t) †	S-282 Stock No.	Weight Each (kg)	Dimensions (mm)			
	Webbing Width (mm)	Eye Width (mm)	Ply					B	C	E	F
1 & 2	50	50	2	10	2.95	1021084	.86	110	54.0	53.5	121
3	75	35	2	13	4.08	1021093	1.27	128	41.4	62.0	115
4	100	50	2	16	5.67	1021100	1.95	145	54.0	64.5	135

* NOTE: Designed for use with Type III, (Eye & Eye), Class 7, 2 Ply web slings.

† Maximum Proof Load is 2 times the Working Load Limit. Minimum Ultimate Strength is 4 times the Working Load Limit.

Sling Saver® Load Rated **"QT"** QUENCHED & TEMPERED **QUIC-CHECK®** **CE**

S-287 CHOKER HOOK



- Available in 2 sizes: 2.95 tonnes (50mm webbing) and 4.08 tonnes (75mm webbing)
- Forged Alloy steel – Quenched & Tempered
- Design factor of 5 to 1.
- Each Connector has a Product Identification Code (PIC) for material traceability along with a Working Load Limit and the name Crosby forged into it.
- Special design of hook protects the synthetic sling when dropped or dragged.
- Designed to reduce friction, abrasion, and fraying in choker area.
- Uses same spool and cover as S-280 Web Connector.
- Replacement Kit for Spool and Web Cover available.

S-287 Sliding Choker Hook

Round Sling Size (No.)	Web Slings*			Working Load Limit (t) †	S-287 Stock No.	Weight Each (kg)	Dimensions (mm)									
	Webbing Width (mm)	Eye Width (mm)	Ply				A	B	C	D	E	F	G	H	J	AA
1 & 2	50	50	2	2.95	1021909	1.68	54.0	63.5	84.5	9.65	153	121	124	8.65	38.1	38.1
3	75	35	2	4.08	1021918	2.77	41.4	89.0	93.0	9.65	179	115	165	34.5	47.8	–

* NOTE: Designed for use with Type III, (Eye & Eye), Class 7, 2 Ply web slings.

† Maximum Proof Load is 2 times the Working Load Limit. Average straightening load (ultimate load) is 5 times the Working Load Limit.

Crosby Sling Saver hardware meets the requirements for minimum stock diameter or thickness, and effective contact width shown in the Recommended Standards Specification for Synthetic Polyester Round Slings by the Web Sling & Tie Down Association. WSTDA-RS1 (revised 2010)